

TOWN OF TELLURIDE

ELEVATION 8,750'
EST. 1878

LEGEND

- Visitors Center
- Free Gondola
- Restrooms
- Free Parking
- Bank / ATM
- Grocery Store
- Medical Center
- Bus Stop
- Free Bus Route

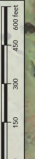
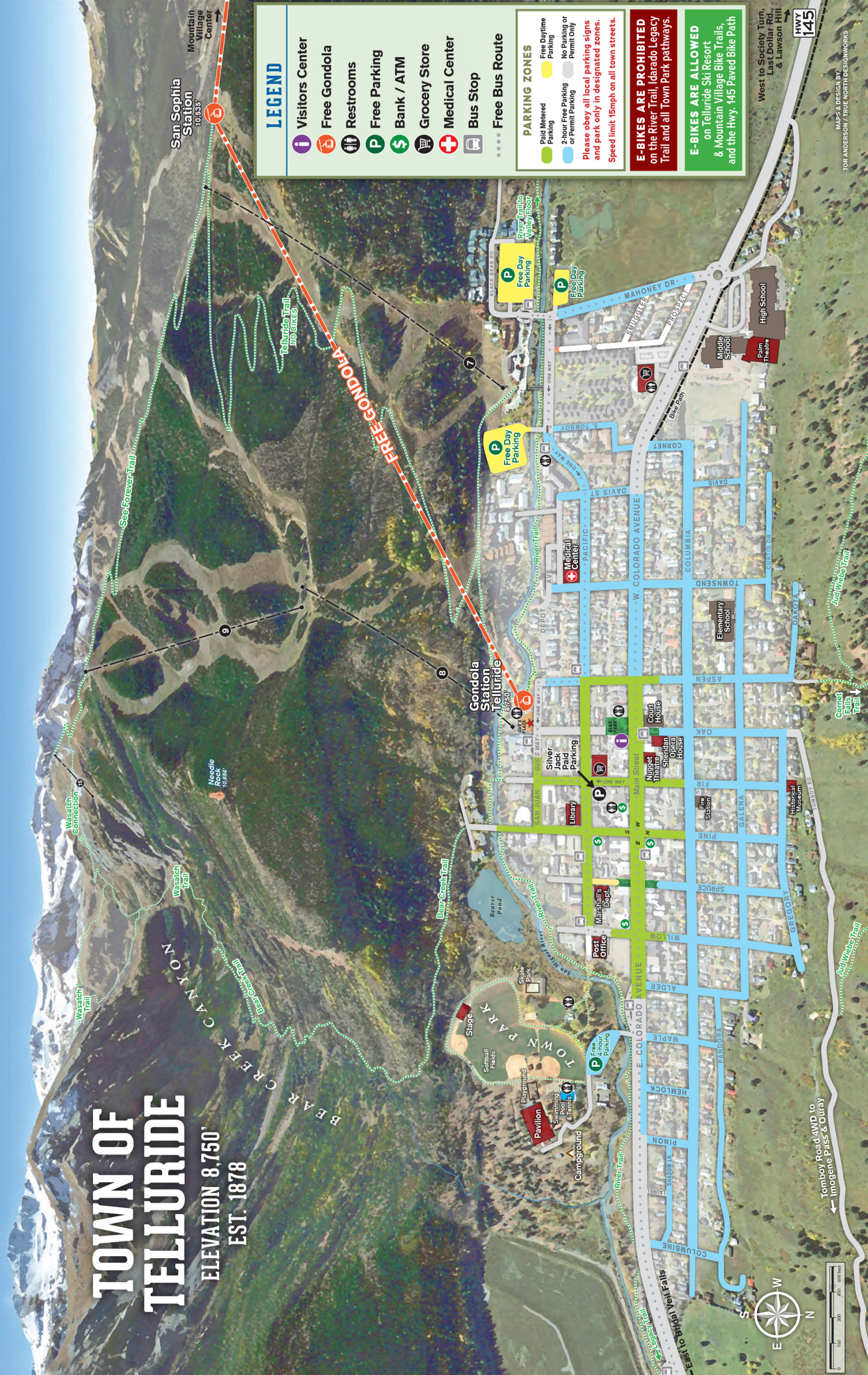
PARKING ZONES

- Paid Metered Parking
- Free Daytime Parking
- 2-hour Free Parking or Permit Parking
- No Parking or Permit Only

Please obey all local parking signs and park only in designated zones. Speed limit 15mph on all town streets.

E-BIKES ARE PROHIBITED on the River Trail, Icaro Legacy Trail and all Town Park pathways.

E-BIKES ARE ALLOWED on Telluride Ski Resort & Mountain Village Bike Trails and the Hwy. 145 Paved Bike Path



← Tombot Road, WVD to Imogene Pass & Ouray

West to Society Turn, Last Dollar Rd., & Lawson Hill

HWY 145

MAPS & DESIGN BY TOR ANDERSON / TRIPLE NORTH DESIGNWORKS